

SigenStor Home Maintenance Guide

Three-phase System

A1

Version:02

Release date: 2024-05-31



Copyright Notice

Copyright© 2024 Sigenergy Technology Co., Ltd. All Rights Reserved.

Description in this document may contain predictive statements regarding financial and operating results, product portfolio, new technology, configurations and features of product. Several factors could cause difference between actual results and those expressed or implied in the predictive statements. Therefore, description in this document is provided for reference purpose only and constitutes neither an offer nor an acceptance. Sigenergy Technology Co., Ltd. may change the information at any time without notice.



SIGENERGY

and other Sigenergy trademarks are owned by Sigenergy Technology Co., Ltd.

All trademarks and registered trademarks in this document belong to their owners.



Website



LinkedIn



YouTube

www.sigenergy.com

Contents

Revision History	4
Overview	5
Chapter 1 Safety Precautions	6
1.1 Tool preparation.....	7
1.2 Label Description	8
Chapter 2 Parts replacement.....	9
2.1 System power off.....	9
2.2 Cooling fan replacement.....	10
2.2.1 Cooling fan removal.....	10
2.2.2 Cooling fan installation	11
2.3 System power on	12

Revision History

Version	Date	Description
02	2024.05.31	Updated Chapter 1 Safety Precautions
01	2024.01.30	First official release.

Overview

Introduction




This document mainly introduces the maintenance of the devices in the SigenStor Home Three-phase system.

Readers

This document is suitable for professionals.

Sign Definition

The following signs may be used in the document to indicate security precautions or key information. Before installation and operation, familiarize yourself with signs and their definitions.

Signs	Definition
 Danger	Danger. Failure to comply may result in death or serious personal injury.
 Warning	Danger. Failure to comply may result in serious personal injury or property damage.
 Caution	Caution. Failure to comply may result in property damage.
Tips	Important or key information, and supplementary operation tips.

Chapter 1 Safety Precautions

Basic Information

Before installing, operating, and maintaining the equipment, familiarize yourself with this document.

The "Danger", "Warning", "Caution" items described in this manual are only supplementary to all precautions.

Danger

Do not perform operations on the equipment with power on. Before operation, please make sure all power supplies to the equipment have been disconnected, including but not limited to the grid side, inverter and diesel generator power switches.

Caution

- Trained or experienced electrical personnel are required to operate the equipment.
- Operators should be familiar with national/regional laws, regulations and standards, the structure and working principle of relevant systems.
- Please read carefully the operating requirements and precautions in this document and "*Important Notice*" before operating. Failure to do so may result in damage to the equipment that is not covered by the warranty.
- According to the packing list, check whether the components are complete and in good appearance. If any abnormality occurs, contact your sales agent in time.
- Check personal protective equipment and installation tools to ensure that they are complete; If not, please make them up.
- Please read the label instructions on the equipment carefully before operation.

1.1 Tool preparation

Protective equipment



Safety hat



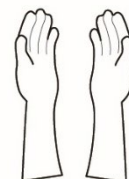
Safety glasses



Dust mask



Protective
gloves



Insulating
gloves

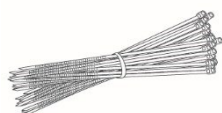


Insulating
shoes

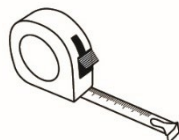
Installation tool



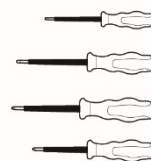
Scissors



Cable tie



Tape measure



Insulation
screwdriver set









Insulation sleeve
set



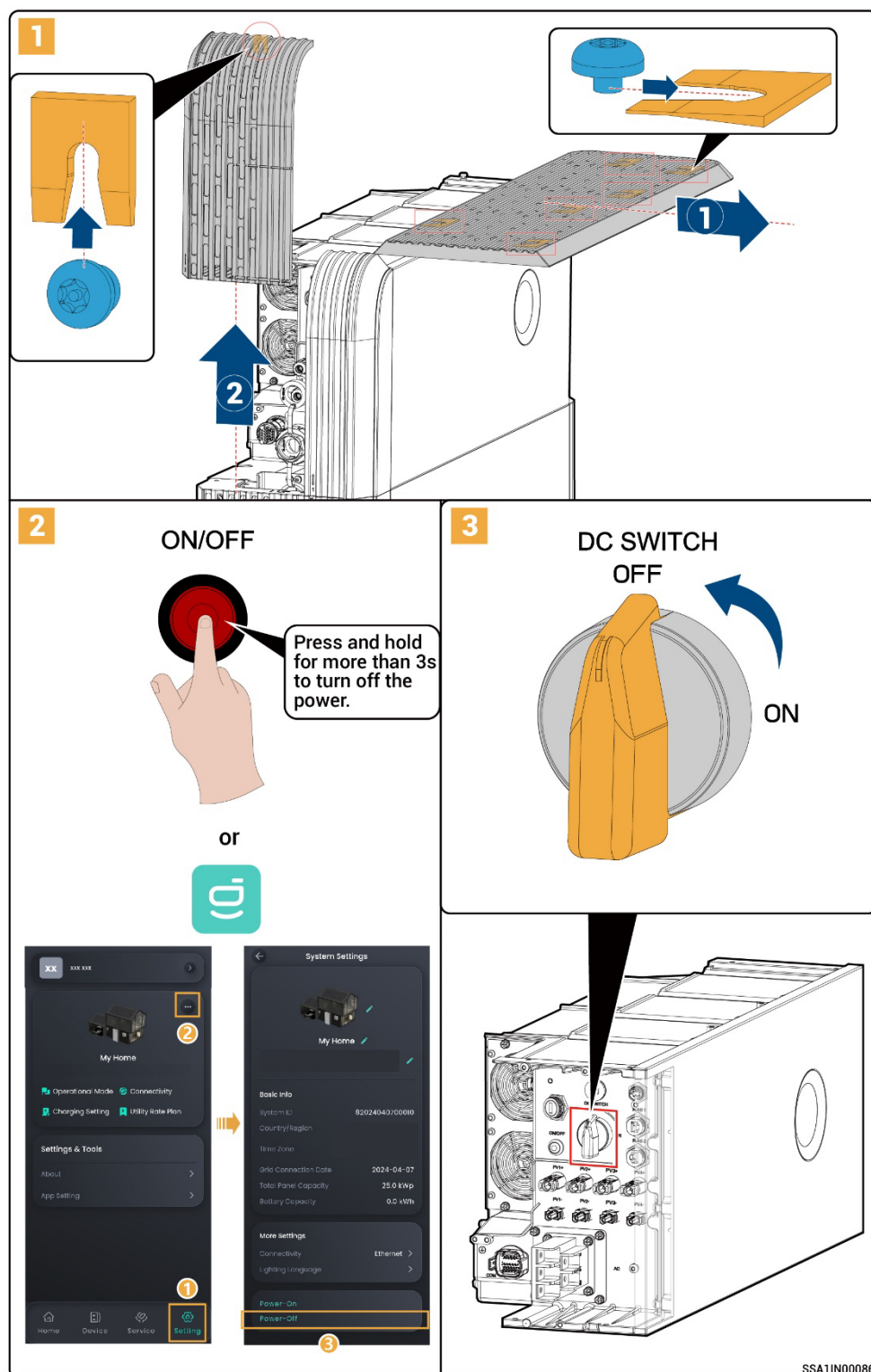
Torque socket
wrench

1.2 Label Description

Symbols	Definition
	<p>Danger! High Voltage</p> <p>High voltage exists inside the equipment when powered on. Do not open the casing when the equipment is running. Any maintenance or servicing operations must be performed by trained and skilled electrical engineers.</p>
	<p>Warning! Life at risk.</p> <p>The equipment has potential hazards after running. Take proper protection when operating the equipment.</p>
	<p>After the equipment is powered off, the discharge of internal components is delayed. Wait 10 minutes until the equipment is fully discharged according to the label time.</p>
	<p>Warning! Risk of burns.</p> <p>The surface of the heat dissipation area is hot when the equipment is running. Do not touch it to avoid burns.</p>
	<p>Please refer to the instructions to operate the equipment.</p>
	<p>Earthing mark</p>

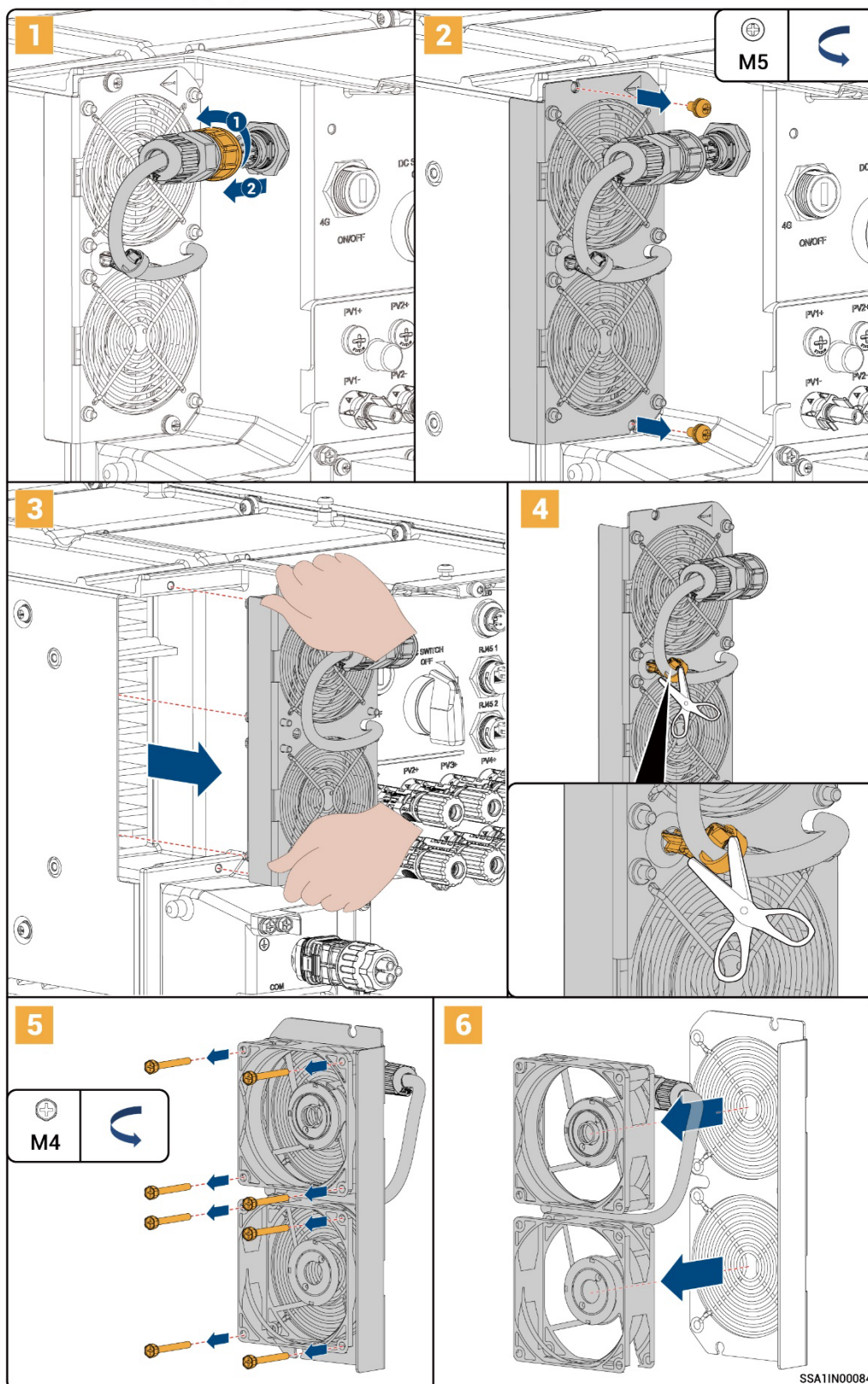
Chapter 2 Parts replacement

2.1 System power off

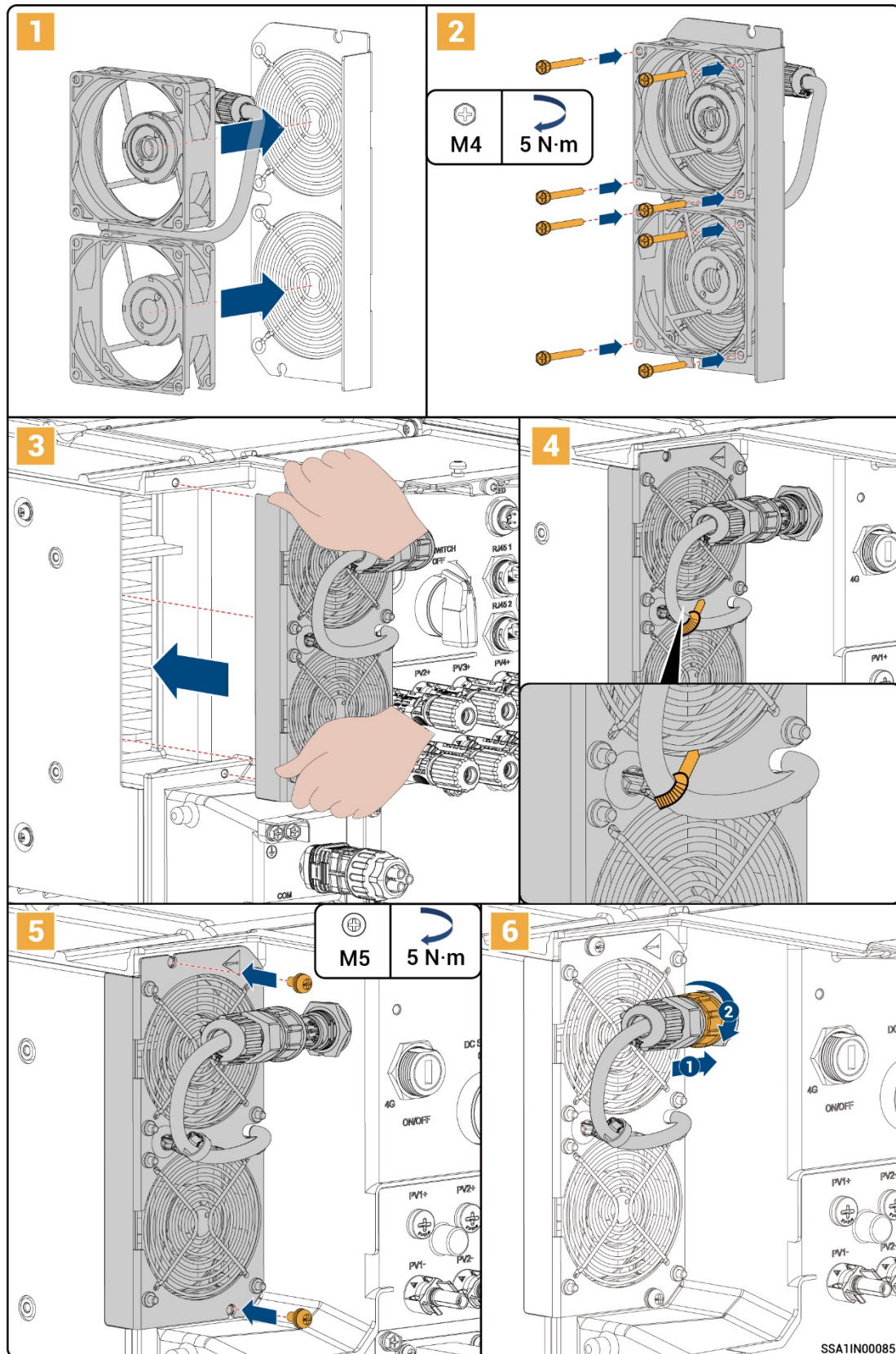


2.2 Cooling fan replacement

2.2.1 Cooling fan removal



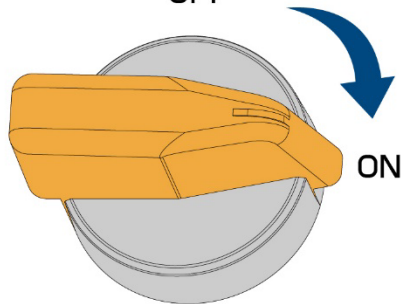
2.2.2 Cooling fan installation



2.3 System power on

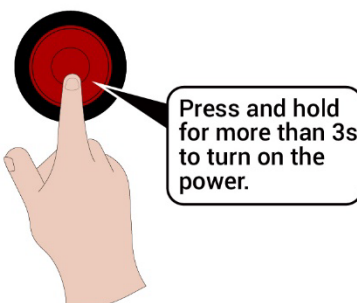
1

DC SWITCH
OFF




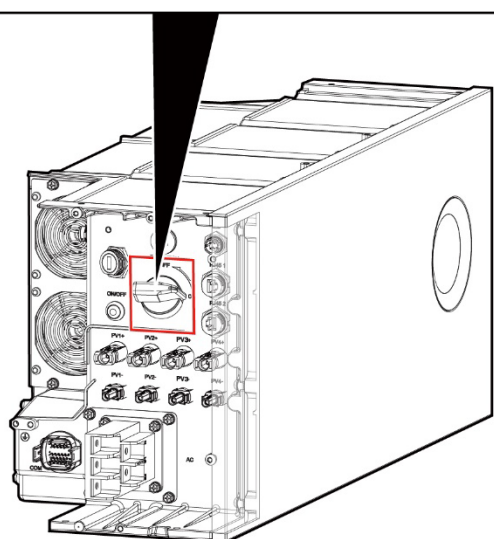
2

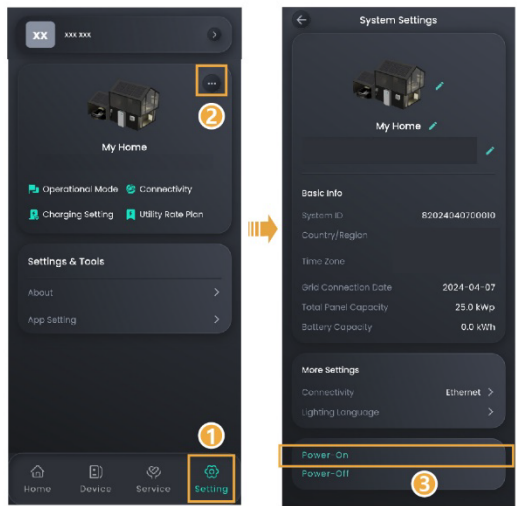
ON/OFF



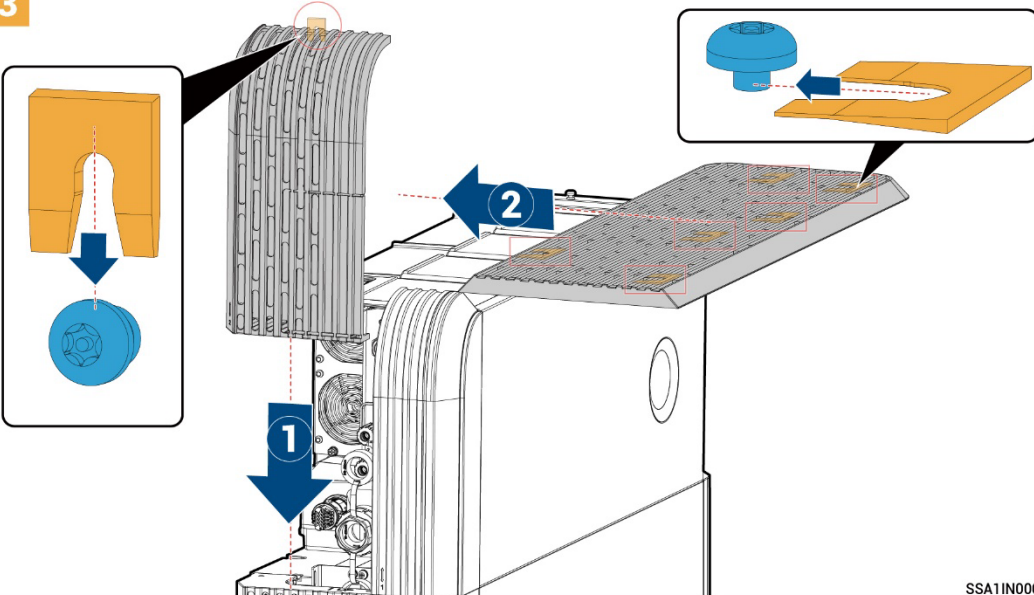
or

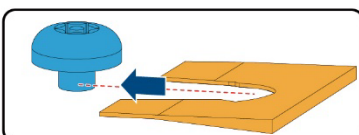






3





SSA1IN00088