

BTS3BE0100

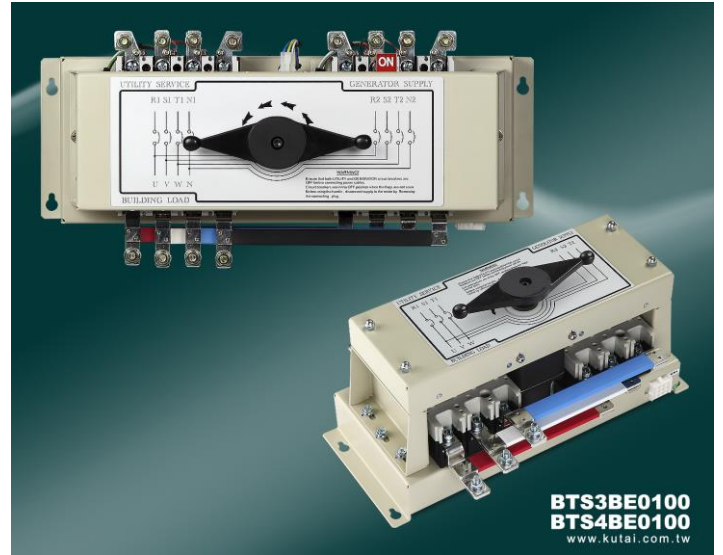
BTS4BE0100

MCCB Type Transfer Switch

Rated Current 100 Amp Rated Voltage 100 – 600 Vac

Features

- High short circuit breaking capacity
- Incorporate OCPD design *1
- Complies with IEC60947-6-1 requirements *2
- MCCB has auxiliary limit switch inside
- Reliable motor-operated transfer mechanism
- Molded insulating manual handle
- PVC-coated bus bar insulation
- With mechanical interlock
- Includes plug-in connector, for simple hook-up to controller
- Optional service maintenance key lock device



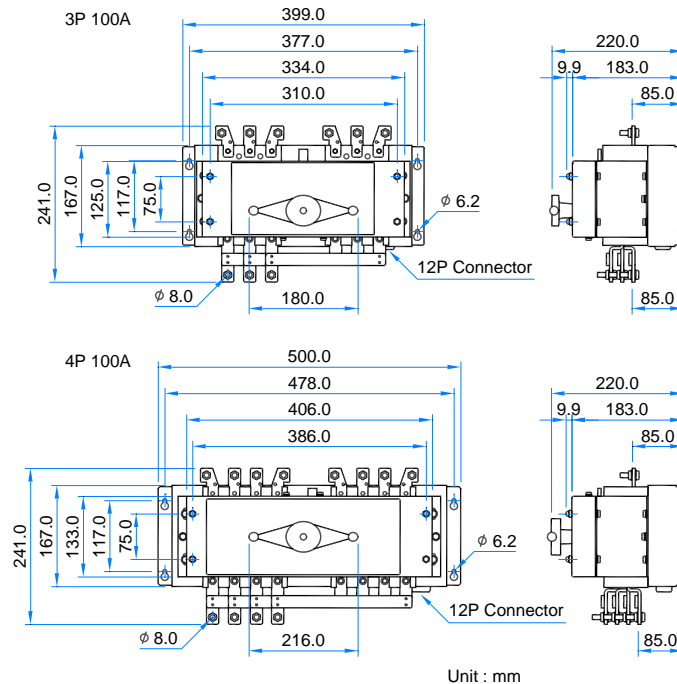
*Customized BTS Available : Please provide the required specification and specified MCCB type (if there is any), we will evaluate the mechanical capability for customers.

BTS Rated Operating Current & AC Rated Breaking Capacity

Type	Poles	Rated Current (A) Ambient Temperature 40 °C	AC Rated Breaking Capacity (KA)					Weight (Kg)
			IEC 60947-2 Icu / Ics					
			240V	380V	415V	440V	500V	
BTS3BE0100	3P	100	25 / 13	18 / 9	18 / 9	15 / 8	10 / 5	9
BTS4BE0100	4P	100	25 / 13	18 / 9	18 / 9	15 / 8	10 / 5	11

*All dimensions and weights shown are approximate for reference only. For special high breaking capacity requirements, please contact us.

Diagram and Dimensions



*1 OCPD : Over current protection device.

*2 (1) IEC60947-6-1 Class CB : ATS provided with over current releases and the main contacts of which are capable of making and are intended for breaking short circuit currents.

(2) IEC60947-6-1 Utilization Category AC-33A :

- Frequent operations.
- Motor loads or mixed loads including motors, resistive loads and up to 30% incandescent lamp.

